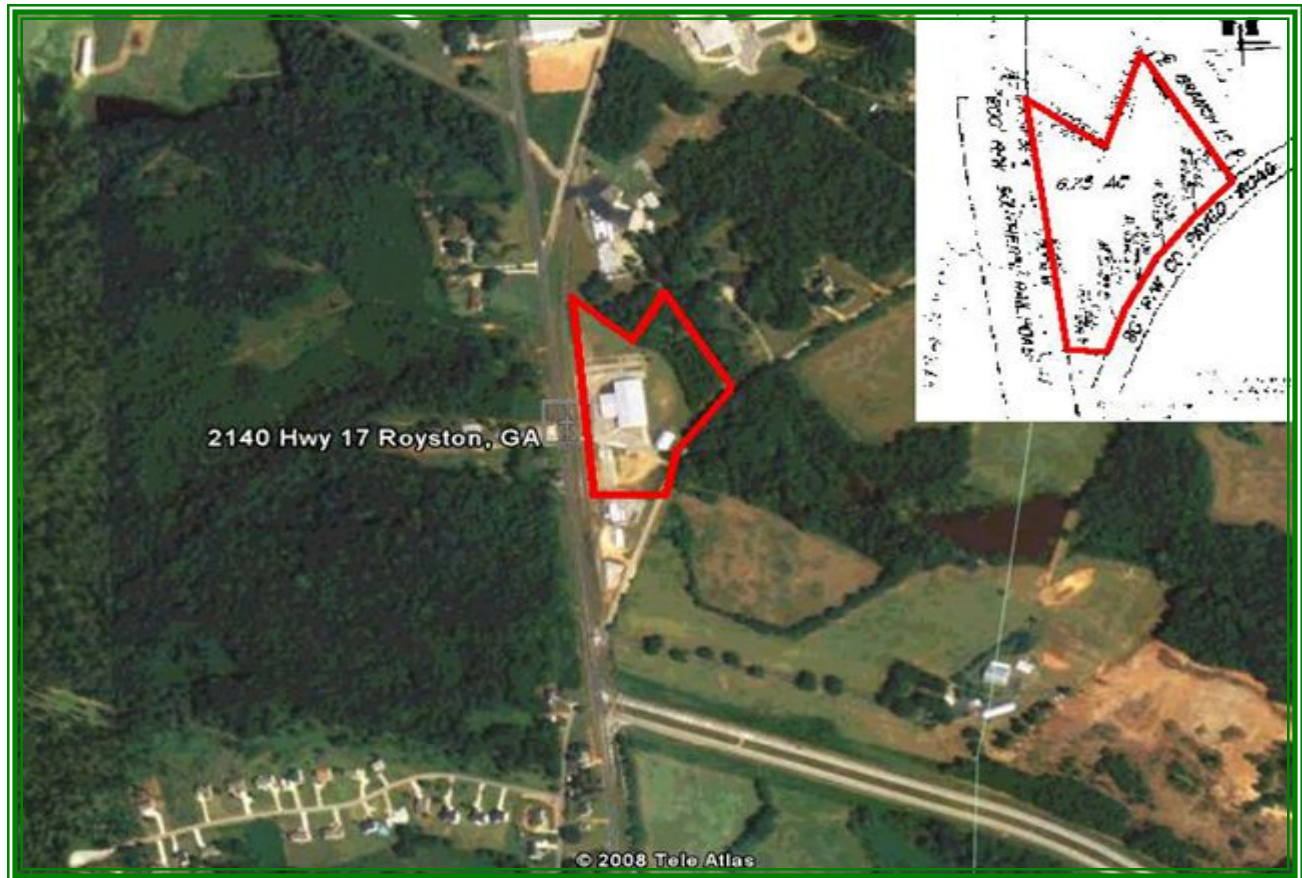


Harbin - Royston



| | | | |
|----------------------|--|--------------|---------------------|
| Total Acreage | 6.75 ac | Power | Georgia Power Co. |
| Ceilings | Whs 21-25' / Display 14-18' | Gas | Royston Natural Gas |
| Building Size | TTL 26,000 sq.ft | Water | 8" City of Royston |
| Access | Fronts Hwy.17/10 mi to I-85 Fronts Hartwell Rail Road | Sewer | NA / Septic System |

For more information, contact Lyn Brumby Allen at (706) 384-5112.

"Where You Want To Invest"