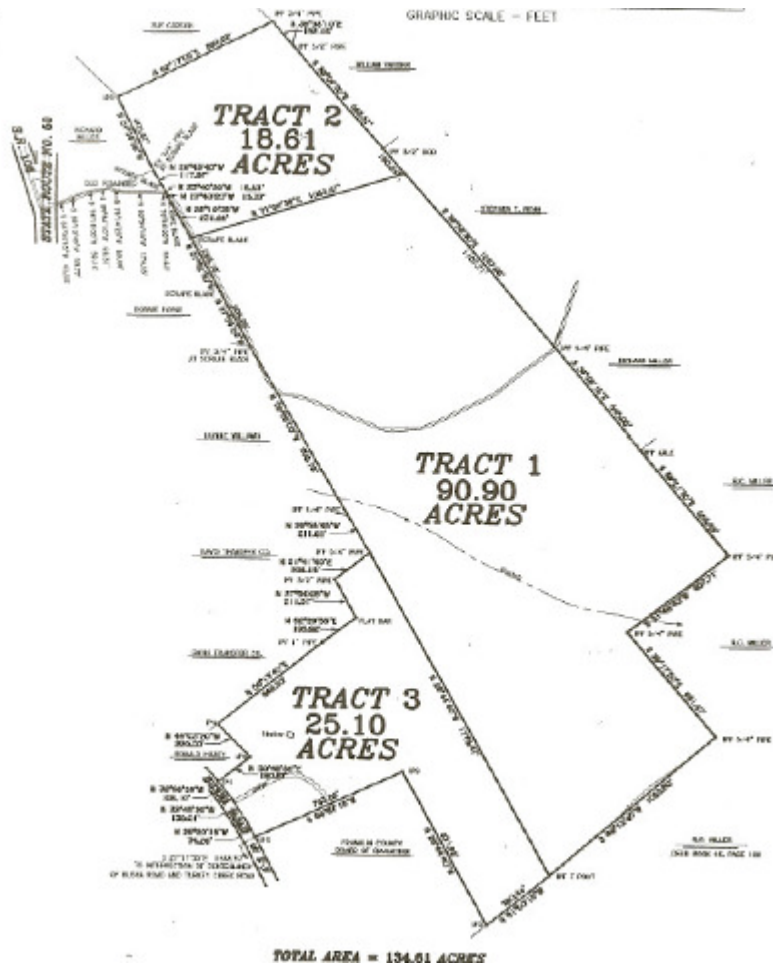


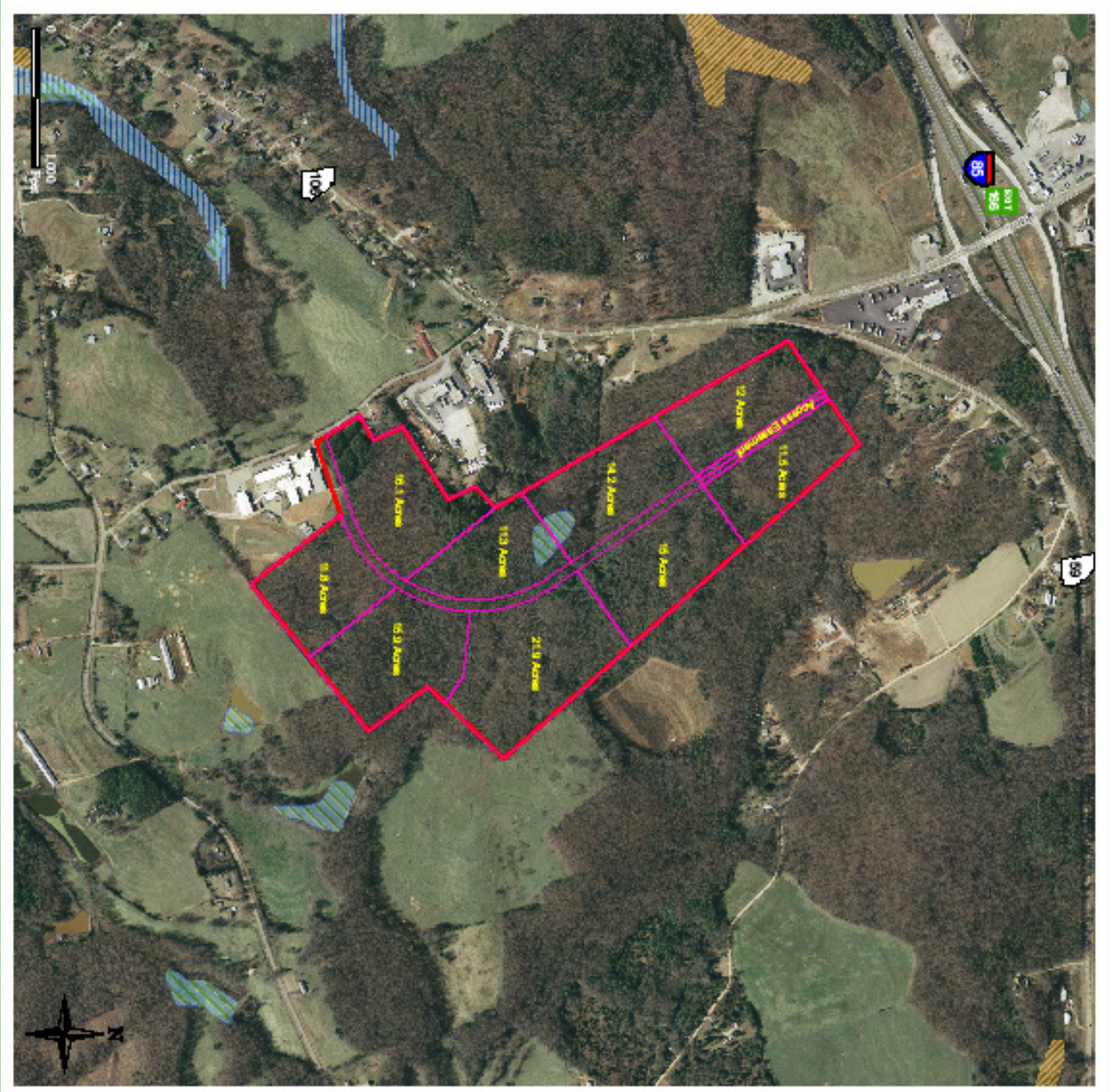
Carnesville Site



| | | | |
|------------------------------------|------------|--------------|---------------------|
| Total Acreage | 134.61 +/- | Power | Customer Choice |
| Available Acreage | 134.61 +/- | Gas | Royston Natural Gas |
| Access to I-85 via exit 166 | | Water | City of Carnesville |
| All Utilities available. | | Sewer | City of Carnesville |

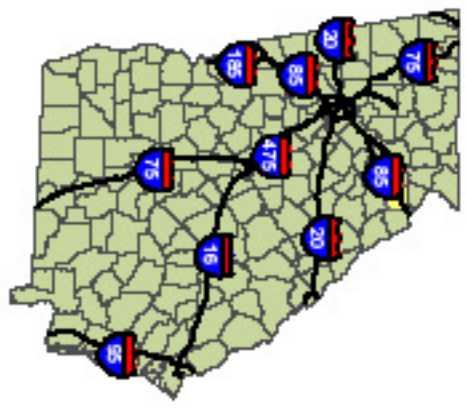
For more information, contact Lyn Allen at (706) 384-5112.

"Where You Want To Invest"



Franklin County

Aerial Map



Legend

- Carnesville Site
- NWT Wetlands
- FEMA Floodplain
- NIRC Hydric Soils
- NIRC Hydric Inclusion

Note: This information is for data use purposes only. All information provided by GIMC, GCS, Conservation, and published sources.

75 Fifth Street NW, Suite 710
 Atlanta, Georgia 30308
 404-521-7000
 800-339-7185
 www.ge-emc.com